



**New Breakthrough,  
High Accuracy**

## BF-7200Plus

Automatic Hematology System

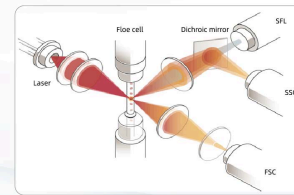


**DIRUI**

**DIRUI**

### Advanced Platform

- Nucleic acid fluorescence staining integrated with semiconductor laser flow cytometry



#### Side fluorescent light (SFL)

- Nucleic acid content of cells

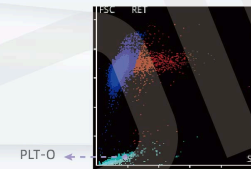
#### Side scatter (SSC)

- Internal cell structure

#### Forward scatter (FSC)

- Cell volume information

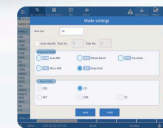
The advanced platform realizes the analysis of the RET channel scatter plot and the high, medium and low fluorescence intensity of the region through the permeation of fluorescence dye into the cell and nucleic acid material binding, to obtained 7 RET parameters (RET%, RET#, IRF, LFR, MFR, HFR, RHE).



Once the deviation of PLT-O in the RET channel and the PLT measured by the sheath impedance method is found to be too large, the software will give a prompt alarm, which can effectively reduce the interference caused by platelet agglutination, large platelet, cell debris and other factors on the PLT count.

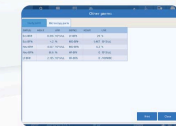
### Multiple Test Modes

- 5 sample analysis modes and 5 test modes can be chosen freely
- Body fluid mode



**Analysis mode:** Automatic whole blood mode, Whole blood mode, Pre-dilute mode, Micro-WB mode, Body Fluid mode

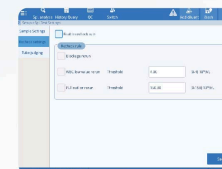
**Detection mode:** CBC, CBC+DIFF, RET, CBC+DIFF+RET, CBC+RET



Supporting body fluid test by providing 7 reportable parameters (WBC-BF, TC-BF#, MN#, MN%, PMN#, PMN%, RBC-BF)

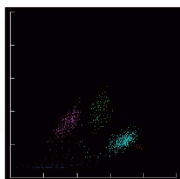
### New Breakthrough

- Automatic recheck function

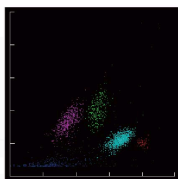


When the automatic recheck function is enabled, the sample will be automatically rechecked when the PLT and WBC count values are lower than the set threshold to reduce the microscopy rate.

● Low value WBC detection function



White blood cells



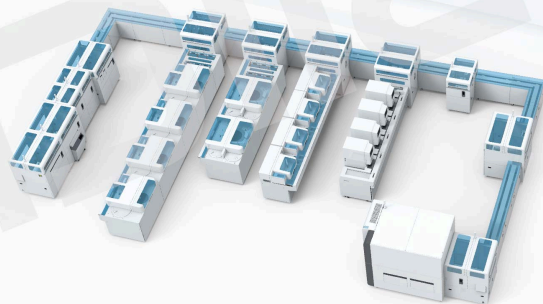
Low-WBC mode

In case of low WBC value, it will automatically triple the number of particles to ensure the accuracy of low white blood cell count.

**Flexible Combination**



- Free combination of 1-4 modules, measuring speed can be up to 480 test/hour, meeting the requirements of large and medium-sized laboratories for large volume testing.
- Supporting pre-storage and collecting tray, expanding sample positions up to 520, improving test efficiency of batch test.



Connecting to LA-60 Sample Processing System, the BF-7200plus can offer more intelligent analysis.

## BF-7200Plus

Automatic Hematology System



### Technical Specification

#### Parameter

37 blood report parameters: WBC, NEU%, LYM%, MON%, EOS%, BAS%, NEU#, LYM#, MON#, EOS#, BAS#, IG#, IG%, RBC, HGB, MCV, HCT, MCH, MCHC, RDW-SD, RDW-CV, NRBC%, NRBC#, PLT, MPV, PCT, PDW, P-LCR, P-LCC, RET%, RET#, IRF, LFR, MFR, HFR, RHE, IPF  
7 body fluid report parameters: WBC-BF, TC-BF#, MN#, MN%, PMN#, PMN%, RBC-BF

#### Test Principle

Cyanide-free colorimetry for HGB test  
Sheath impedance method for RBC and PLT test  
Semiconductor laser flow cytometry for WBC, RBC, NRBC test

#### Throughput

CBC+DIFF: 120 samples / hour  
CBC+DIFF+RET: 83 samples / hour  
BF: 40 samples / hour

#### Data Storage Capacity

At least 500, 000 results

#### Data System

RJ45 network interface, USB interface, can be connected to LIS/HIS

#### Dimension (D×W×H)

835mm×620mm×770mm

#### Weight

86kg

## DIRUI

### DIRUI INDUSTRIAL CO.,LTD.

3333 Yiju Street, New&High Tech. Development Zone Changchun, Jilin 130103, P.R. China  
E-mail: marketing@dirui.com.cn Http://www.dirui.com.cn/en  
Tel: +86(431)85083721

·Specifications subject to change without notice.  
20210201



Official WeChat  
official account